



The Baker

**Conservation and
Interpretation of an
Old Kingdom Serving Statue**

*The 68th Annual Meeting of the American Research Center in Egypt,
April 31-23, 2017, Kansas City, MO, USA, 2017*



HELLO!

Heather White
Objects Conservator

MA in the Conservation of Archaeological and Ethnographic Materials
UCLA/Getty Program (2016)

Former Graduate Conservation Intern at the Nelson-Atkins Museum of Art



Introduction

“The Dough Boy”

NAMA 35-17



Title: Servant Kneading Dough
Culture: Egyptian
Period: Old Kingdom, 5th Dynasty
Materials: limestone, paint



Brummer Gallery object card



Previously repaired before the museum acquired it

Repairs were distracting and did not match well

Questioned whether the head was positioned correctly, and original to the piece



Examination

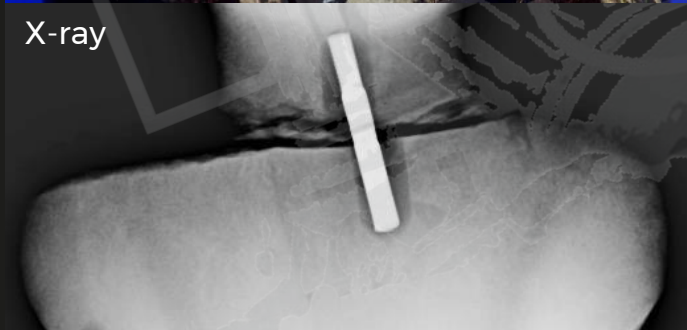
Assessing Condition



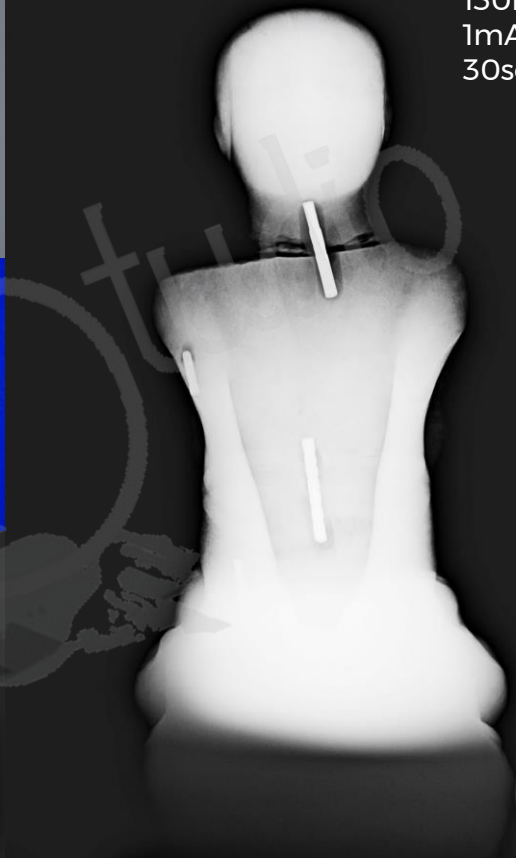
Ultraviolet



X-ray





130kV
1mA
30sec





7 Breaks

 Inpainted
Plaster Fill

 Over-
painting

 Shellac

 Adhesive?

The background is a close-up photograph of a textured surface, possibly stone or concrete, showing signs of weathering and discoloration. A dark grey rectangular overlay is centered on the image, containing the text. The text is white and consists of a large main title and a smaller subtitle below it.

Treatment

Conservation and Restoration

Preliminary Removal of Old Restorations

NAMA 35-17
During Treatment



Disassembly



Cleaning



Cleaning



Assembly



Fragments adhered using
Paraloid B-72 in acetone

Shoulder Fill



Shoulder Fill



Shoulder Fill



Gap-fill material: Aquazol 200 in isopropanol,
bulked with cellulose fibers

Gap Filling + Inpainting



Gap Filling + Inpainting



Gap Filling + Inpainting



Gap Filling + Inpainting



Gap Filling + Inpainting



Gap Filling + Inpainting



Gap Filling + Inpainting





Before



Progression of Treatment



After

A close-up photograph of an ancient stone inscription, possibly a tablet or a wall carving. The stone is light-colored and shows signs of weathering and erosion. The inscription is partially obscured by a semi-transparent dark grey rectangular overlay. The text 'Identity' is written in a large, bold, white sans-serif font, and 'The Inscription' is written below it in a smaller, white sans-serif font. The background is dark, suggesting an underground or dimly lit environment. There are some faint, illegible markings on the stone surface, including what appears to be a large number '10' in the upper right and some other characters or symbols in the lower left.

Identity

The Inscription

RTI-Specular Enhancement



NAMA 35-17



Translation

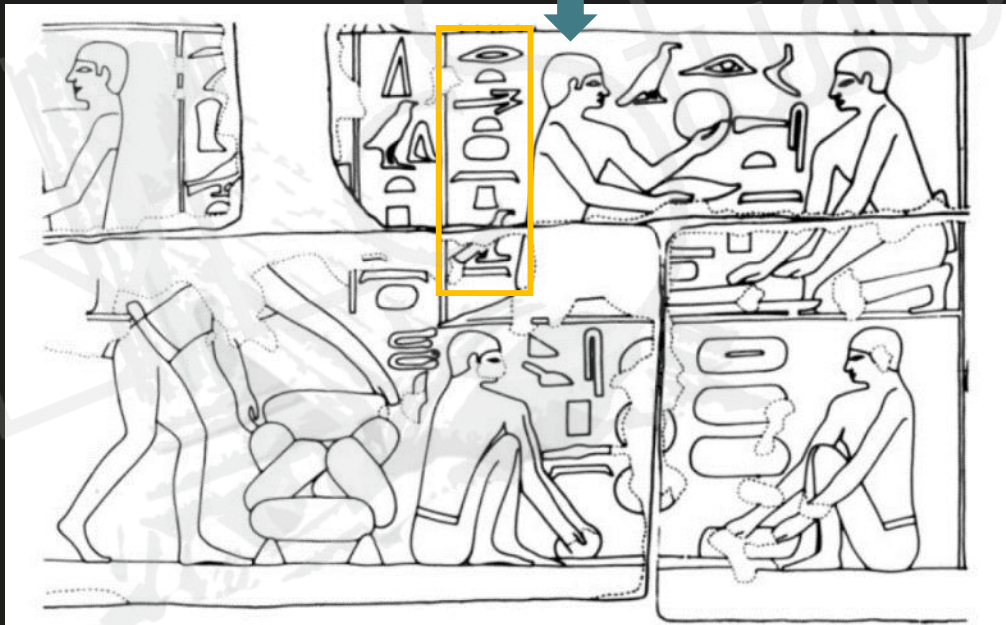


**Baker
Nebes**



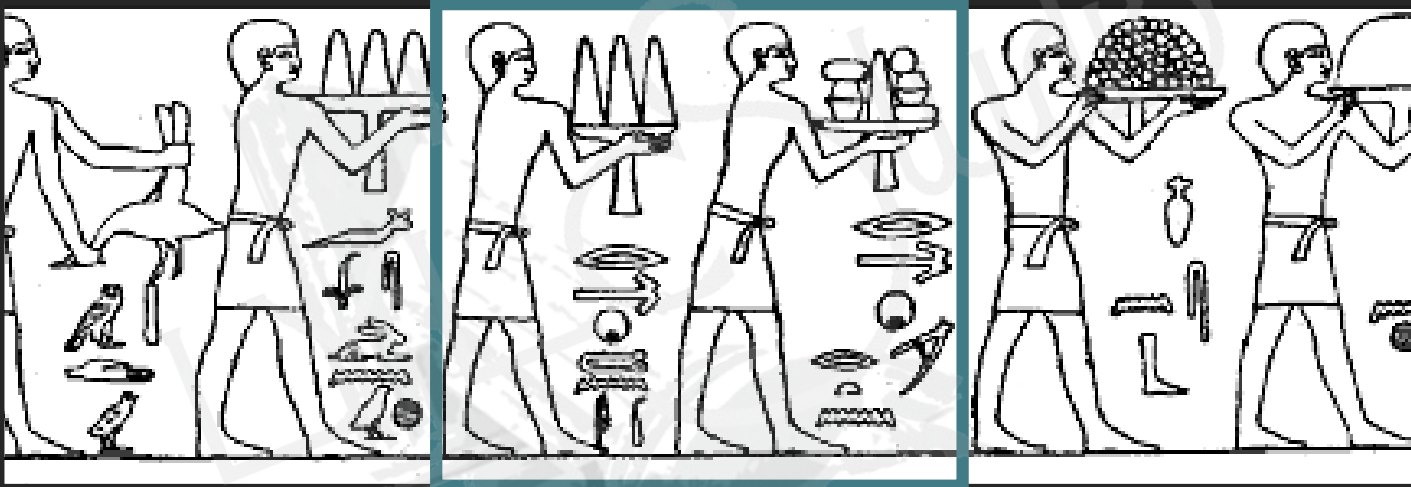
“Baker” (*rtHty*)

The **Baker Negan** and other men shaping dough, from the wall relief in the tomb of Iy-neferet.



“Baker” (*rtHty*)

East wall relief in the *mastaba* of Ka-ni-nisut.



Baker Ni-meret and **Baker Tjenty**
are named and shown in a large food procession.

Translation



**Baker
Nebes**





Interpretation

Parallels & Activity

**Breasted classified NAMA 35-17
as Type 6 servant statue:**

**“Man Forming Cakes or
Loaves of Dough”**



James Breasted, *Egyptian Servant Statues* (1948), Pl. 27



NAMA 35-17

ÄS 4862



Parallel #1:

Servant Grinding Flour

Late 5th Dynasty

Giza

State Museum of Egyptian Art
Munich

▮ 20 serving statues

▮ Excavated by Steindorff in 1905

▮ None are said to be inscribed

Image: [<http://www.giza-projekt.org/Funde/Muenchen□4862/4862.html>]



Parallel #1:

Servant Grinding Flour

Late 5th Dynasty

Giza

State Museum of Egyptian Art

Munich

▮ 20 serving statues

▮ Excavated by Steindorff in 1905

▮ None are said to be inscribed

ÄS 4862



Inscription: *The Ka-servant Inpu-shesi*

Parallel #2:

Statuette of a Fuller

Late 5th Dynasty

Giza

Location: uncertain

- ▮ 9 serving statues
- ▮ Tomb of Ni-kau-Hathor and her husband
- ▮ Excavated by Selim Hassan in the 1930s
- ▮ 5 men and 3 women are inscribed

Parallel #2:

Statuette of a Fuller

Late 5th Dynasty

Giza


Believe to be at the Egyptian
Museum in Cairo

▮ 9 serving statues

▮ Tomb of Ni-kau-Hathor and her
husband

▮ Excavated by Selim Hassan in
the 1930s

▮ 5 men and 3 women are
inscribed



Ni-kau-Hathor serving statues *in-situ*,
being excavated from a nearly
untouched *serdab* chamber.



Parallel #3:

Statue, Human

Late 5th Dynasty

Giza

Oriental Institute Museum

Chicago

▮ From the largest group of inscribed Old Kingdom serving statues

▮ Tomb of Nykauinpu

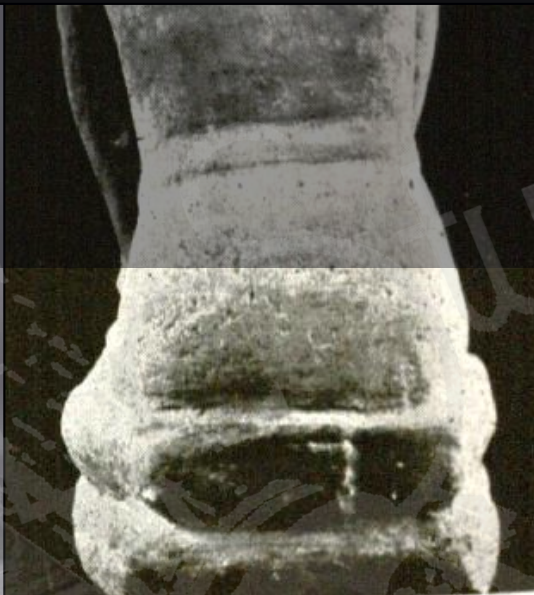
▮ “Baker forming ingot-shaped cakes” –Tooley's *Egyptian Models and Scenes* (1995)

Inscription: *His son, Khaef-Min*

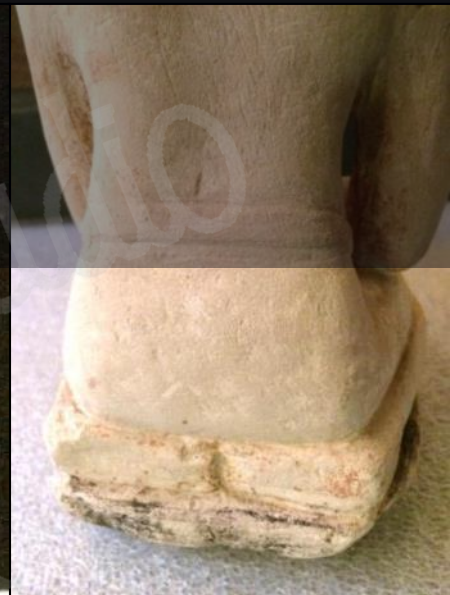
NAMA 35-17



Hassan's "Fuller"



OIM 10624



Those Feet!

What has been learned?



Baker Nebes



Munich
Servant
Grinding Flour



Hassan's
Fuller



Chicago
Forming Loaves
or Ingot-
shaped Cakes

Thank you!

Special Thanks to

ARCE

Kate Garland

Robert Cohon

Ann Roth

Lisa Haney

Emily Teeter

Bruce Hamper

John Twilley

Sources

Breasted, James Henry. 1948. *Egyptian Servant Statues*. Bollingen Series XIII. Washington D.C.: Pantheon Books.

Hassan, Selim. 1950. *Excavations at Giza VI: 1934-1935. Part 3: The Mastabas of the Sixth Season and their Description*. Cairo: Government Press.

Jones, Dilwyn. 2000. *An index of ancient Egyptian titles, epithets and phrases of the Old Kingdom*. Archaeopress, Oxford, England.

Junker, Hermann. 1935. *Giza II. Die Mastabas der beginnenden V. Dynastie auf dem Westfriedhof*. Vienna and Leipzig: Hölder-Pichler-Tempsky.

Ranke, Hermann. 1935. *Die altägyptischen Personennamen I-III*. Glückstadt/Hamburg/NewYork.

Roth, Ann Macy. 2002. "The Meaning of Menial Labor: 'Servant Statues' in Old Kingdom Serdabs." *Journal of the American Research Center in Egypt* 39: 103-121.

Schoske, Sylvia and Dietrich Wildung, eds. 2013. *Das Münchner Buch der ägyptischen Kunst*. München: C.H. Beck

Schürmann, Wolfgang & Badisches Landesmuseum Karlsruhe. 1983. *Die Reliefs aus dem Grab des Pyramidenvorstehers Ii-nefret* (1. Aufl). C.F. Müller, Karlsruhe.

Tooley, Angela M. J. 1995. *Egyptian models and scenes*. Shire, Princes Risborough.